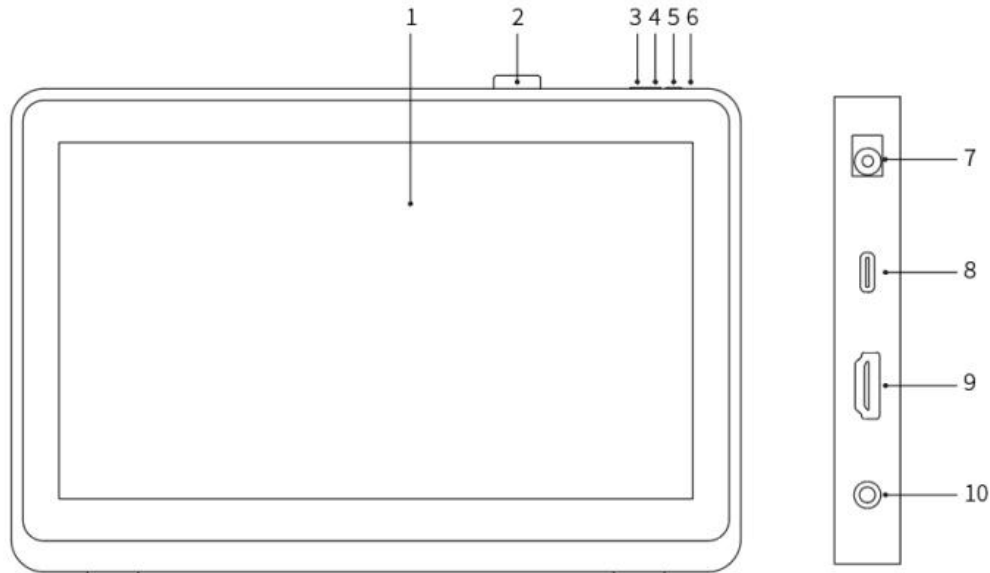


Artist 22 Plus Drawing Display

Product Overview



1. Display/Work Area
2. Pen Clip
3. Brightness Down
4. Brightness Up
5. Power Key
6. Power Indicator Light
 - a. Blue: When the drawing display is connected to the computer and the power supply is switched on, the indicator will be on.
 - b. Orange: When the power supply of the drawing display is turned on, but no signal is received from the computer.
 - c. Off: When the power supply of the drawing display is turned off.
7. Power Jack
8. USB-C Port
9. HDMI Port
10. Headphone Port

Package Includes

- Drawing display
- X3 Pro Smart Chip Stylus
- Pen clip
- Pen nibs
- Nib removal tool
- Power adapter and cable

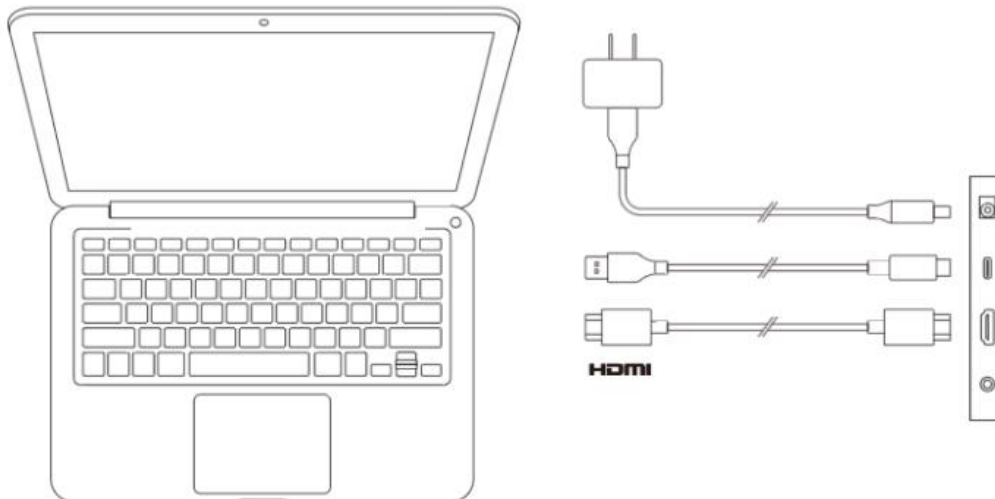
- HDMI cable
- USB-C to USB-C cable
- USB-C to USB-A cable
- Cleaning cloth
- Glove

Connecting the Product

1. HDMI Connection

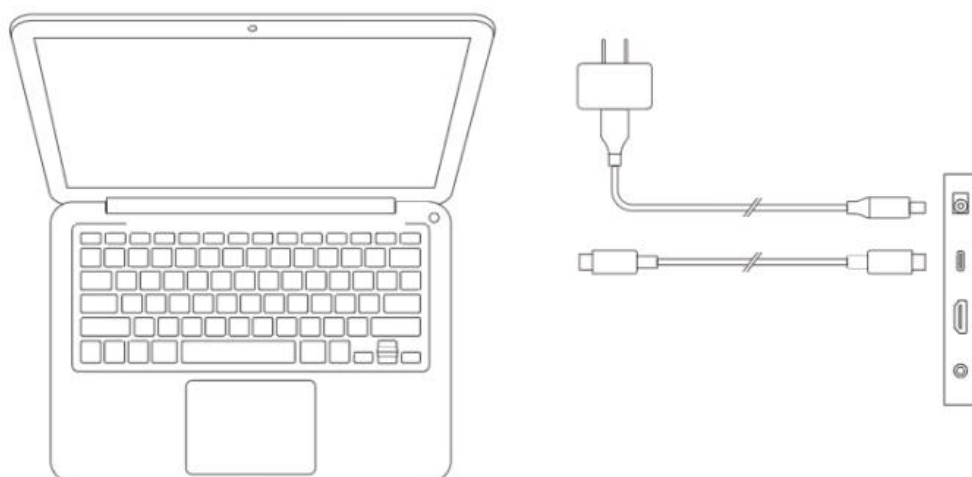
Connect the drawing display to your computer's HDMI and USB ports using the HDMI and "USB-C to USB-A" or "USB-C to USB-C" cables. Then connect the power cable to a power outlet.

* The terms HDMI and HDMI High-Definition Multimedia Interface, and the HDMI Logo are trademarks or registered trademarks of HDMI Licensing Administrator, Inc. in the United States and other countries.



2. USB-C Connection (for full-featured USB-C ports)

Connect the drawing display to your computer's USB-C port using the "USB-C to USB-C" cable. Then connect the power cable to a power outlet.



Compatibility

Windows 7 or later

macOS 10.10 or later

Chrome OS 88 or later

Android (USB3.1 DP1.2)

Linux

Product Settings

Driver Installation

To ensure the device works properly, please install the driver before using.

Please download the driver suitable for your product model from XPPen website (<https://www.xp-pen.com>).

Notes:

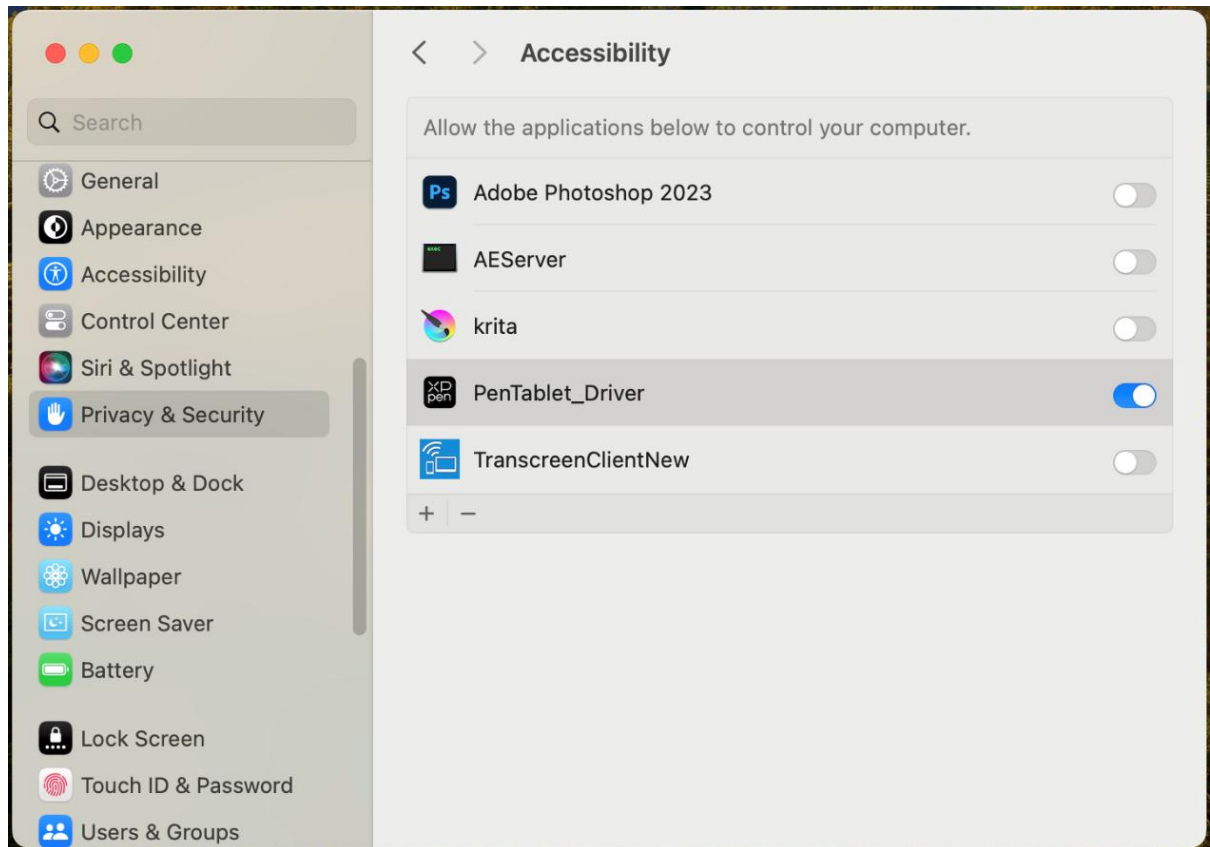
1. Before installing the driver, please turn off all antivirus software and graphics software.
2. Uninstall drivers (if any) for other drawing displays/tablets before the installation.
3. Restart your computer after the installation is completed.
4. For the best performance for your device, we recommend you install the latest driver.

Windows:

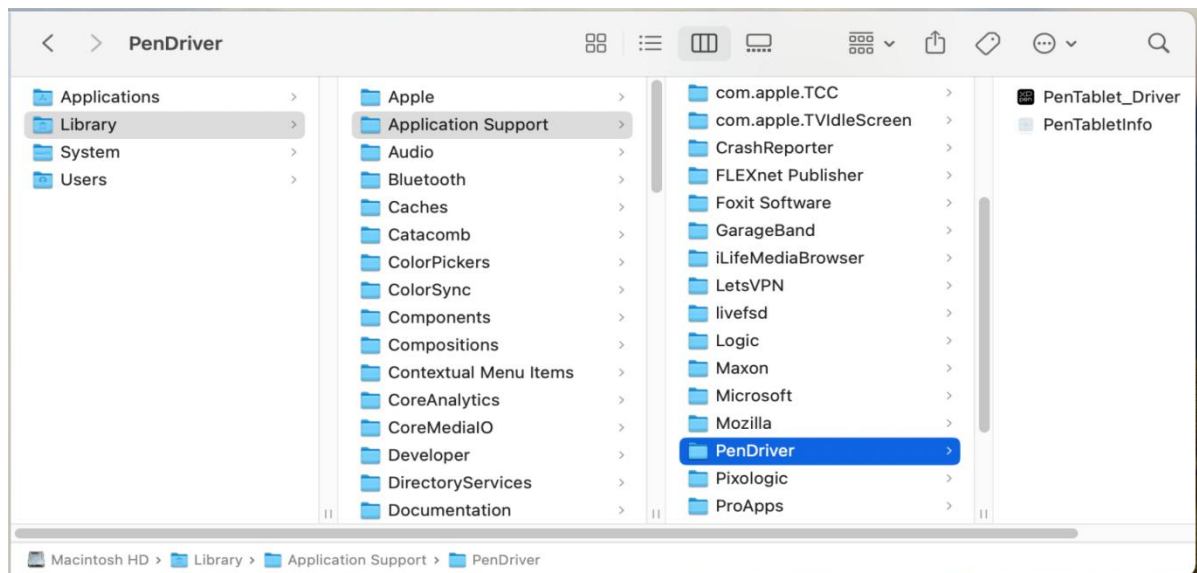
Unzip and run the "exe" file as administrator, follow the prompts to complete the installation.

Mac:

Unzip and run the "dmg" file, follow the prompts to complete the installation. Go to System settings -> Privacy & Security -> Accessibility, ensure PenTable_Driver is enabled.



If there is no PenTablet_Driver on the list, go to Library -> Application Support -> PenDriver to add manually.



Linux:

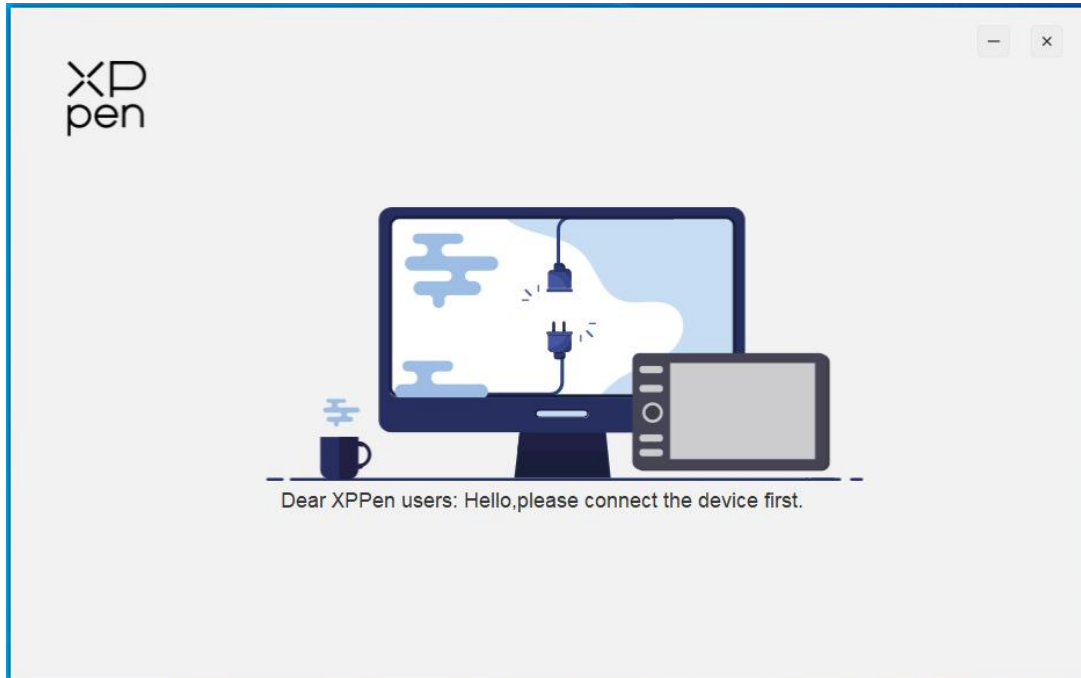
Deb: Enter command `sudo dpkg -i`. Drag the installation file to the window and execute the command;

Rpm: Enter command `sudo rpm -i`. Drag the installation file to the window and execute the command;

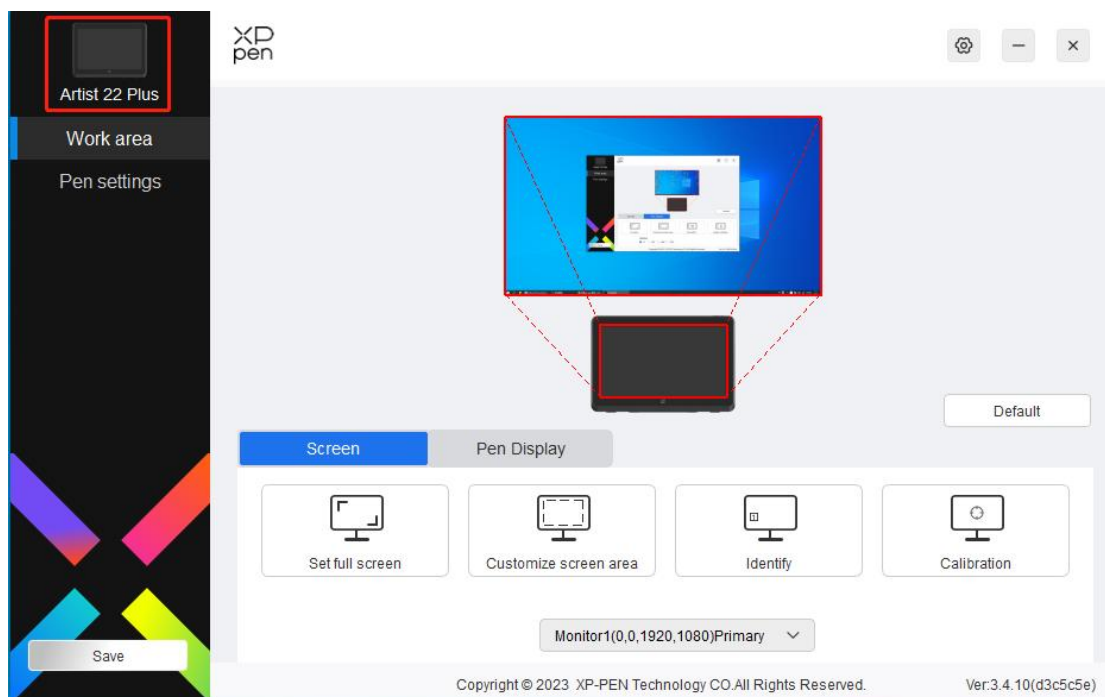
Tag.gz: Unzip file. Enter command `sudo`. Drag install.sh to the window and execute command.

Introduction to Driver

If the device is not connected or the connection fails, you can see the following prompt. In this case, try to restart your computer or the driver, or contact our service staff for support.

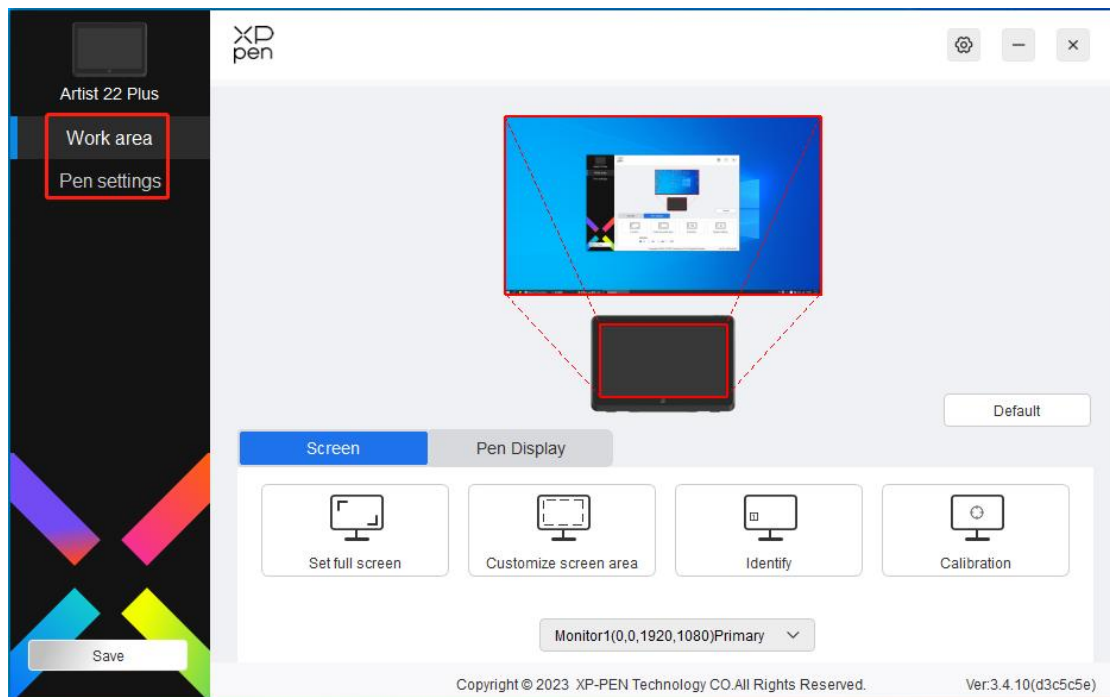


If the device is connected to your computer successfully, the device image and name will be displayed in the upper left corner of the driver.



You can connect up to multiple devices via the driver at the same time. Customize a specific device's settings after switching to that device, and all changes made will only apply to that device.

Device Settings



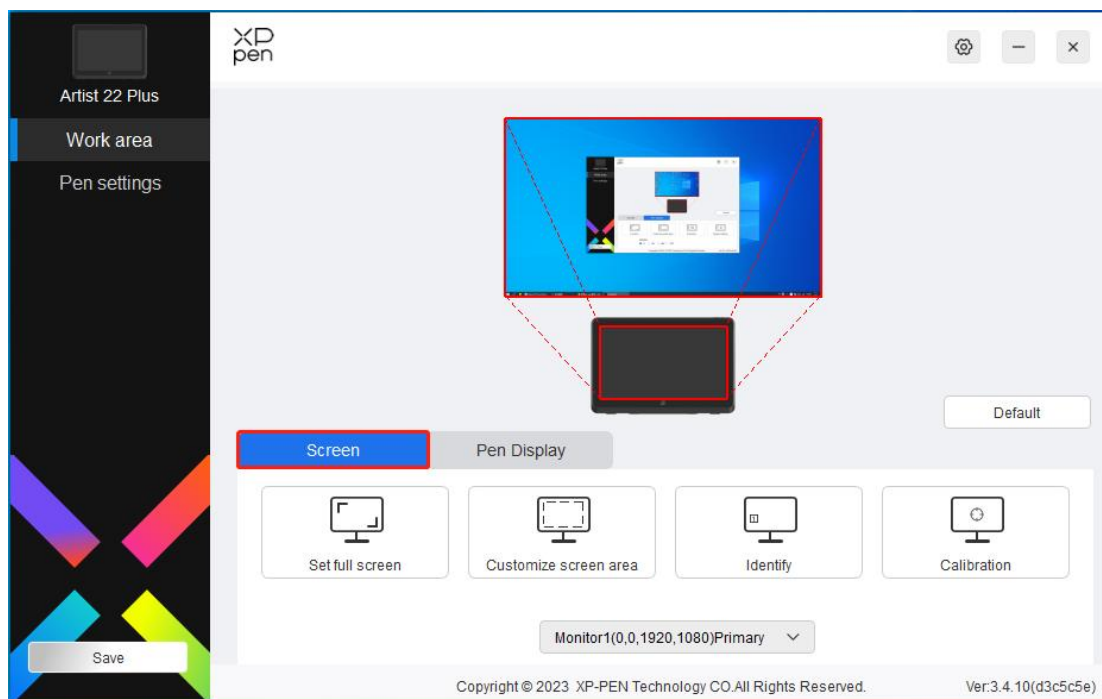
You can set the drawing tablet functions, including:

1. Work Area
2. Pen Settings

Work Area

Go to Work Area and define the mapping between the device's work area and the screen display area.

Screen



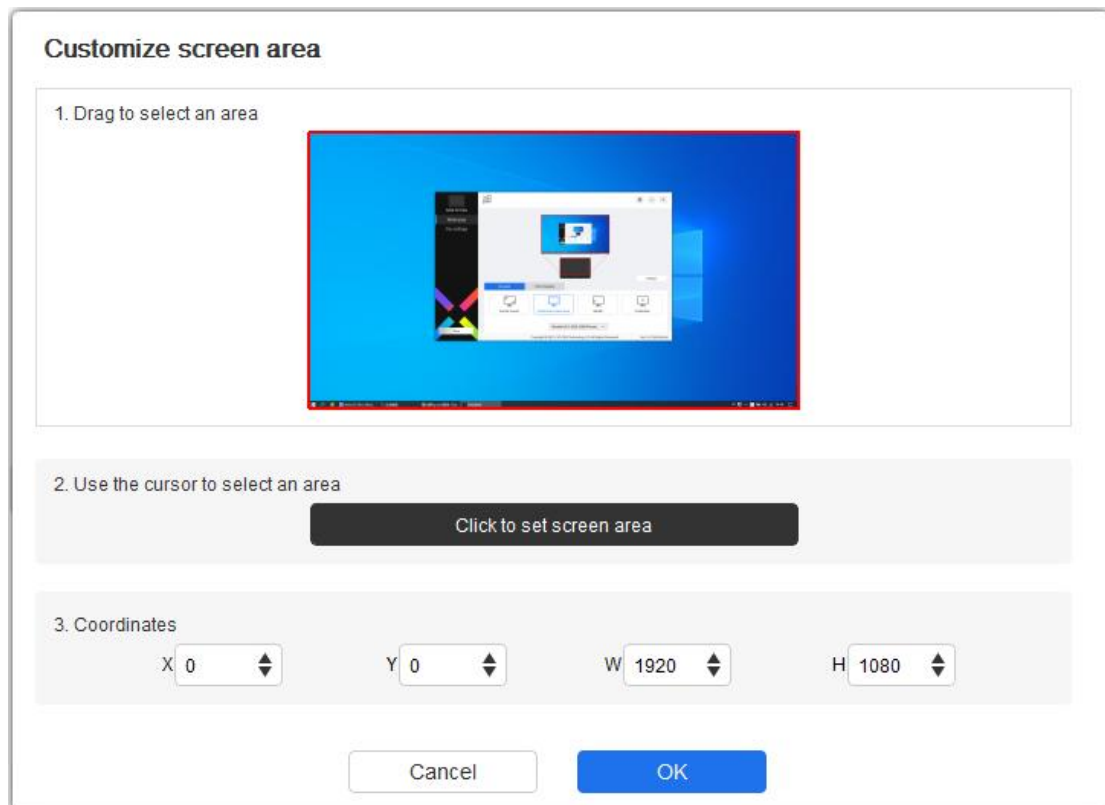
You can set the mapping between the display area of the monitor and the device.

If multiple monitors are used in copy mode, the work area of the device will be mapped to all monitors. When the pen moves in the work area, the cursor on all monitors will move at the same time.

If multiple monitors are used in extended mode, go to monitor tabs to select one of the monitors that the work area of the device will be mapped to. The default mapping is XPPen drawing display.

There are following options available to set the monitor mapping area:

1. Set full screen: The whole area of the selected monitor;
2. Customize screen area: Three ways;



- 1) Drag to select an area: Drag the cursor from one point to another within the red area.
- 2) Use the cursor to select an area: Select "Click to set screen area", then click the upper left corner position and lower right corner position to select on the screen.
- 3) Coordinates: Manually enter coordinates in the corresponding input boxes for X, Y, W and H.

Identify:

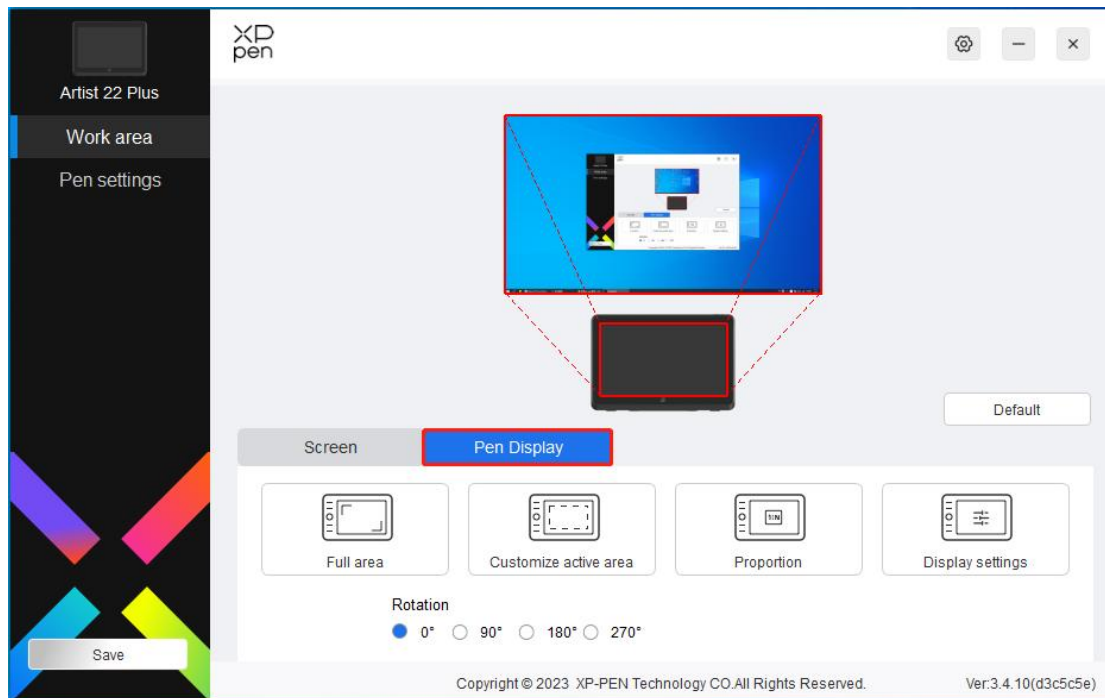
Identify all connected monitors. The numeric identifier will be displayed in the lower left corner of each monitor.

Calibration:

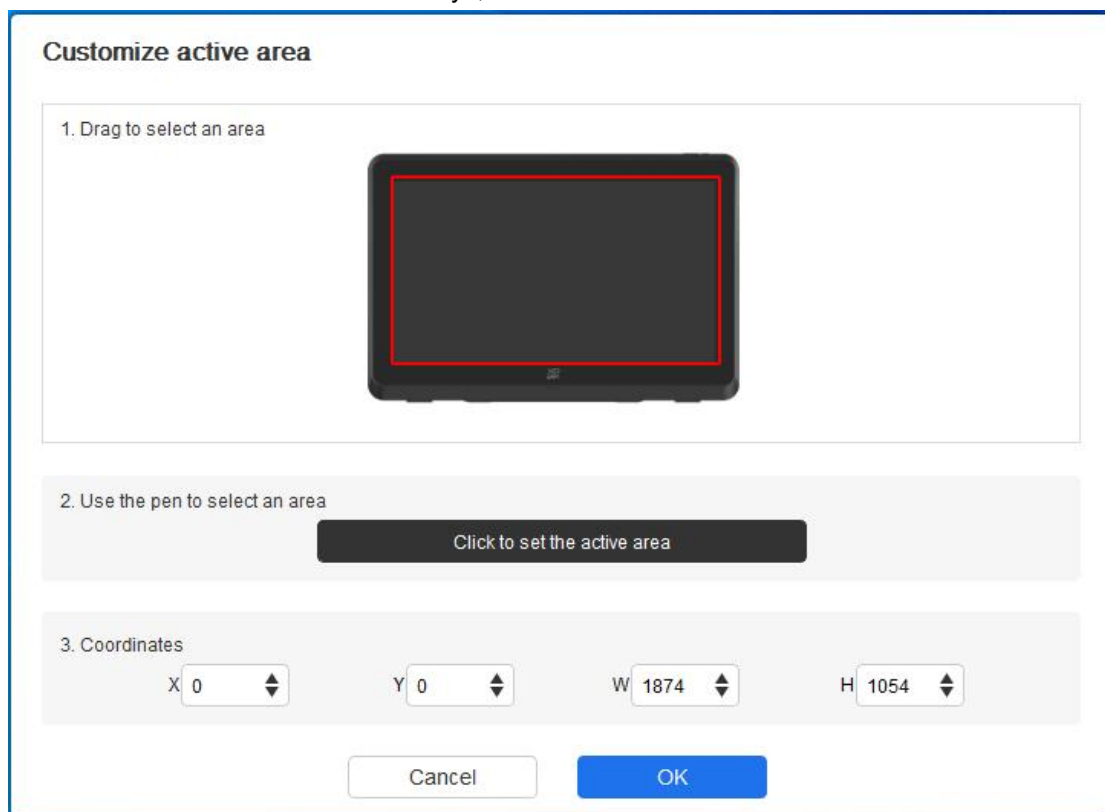
Hold the stylus in your usual way and click the center of the red cross on the monitor to calibrate the offset between the stylus and the cursor.

Drawing Tablet

You can set the work area of current device here. The driver enables the following ways to set the work area of the device:



1. Full area: The whole work area of the device.
2. Customize active area: Three ways;



- 1) Drag to select an area: Drag the cursor from one point to another within the red area.
- 2) Use the pen to select an area: Select "Click to set active area", then use stylus to click the upper left corner position and lower right corner position on your device.

- 3) Coordinates: Manually enter coordinates in the corresponding input boxes for X, Y, W and H.

Proportion:

Scale your device's work area and selected display area proportionately.

For example: After selecting proportion, if you draw a circle on the device, a circle will appear on the screen, but some part of the work area may not be used. But if you don't choose the proportion and draw a circle, then the circle may change into an ellipse on the screen.

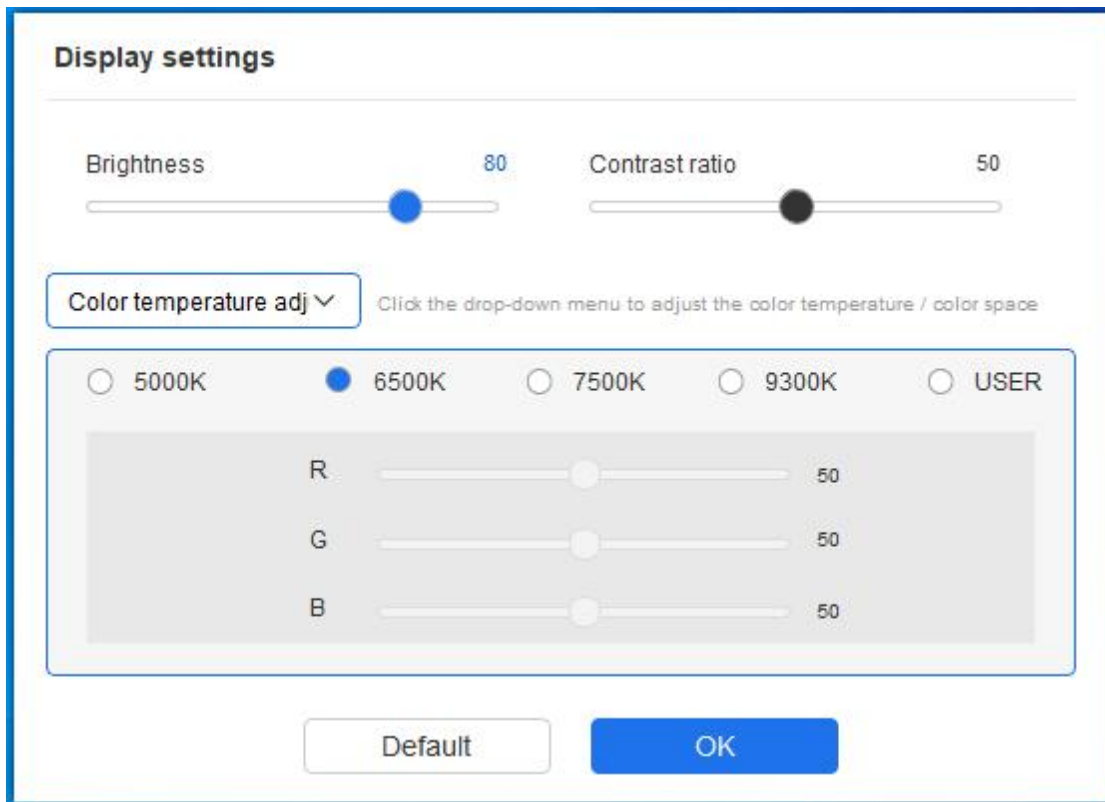
Rotation:

You can set the device to 0°, 90°, 180° and 270° clockwise for use.

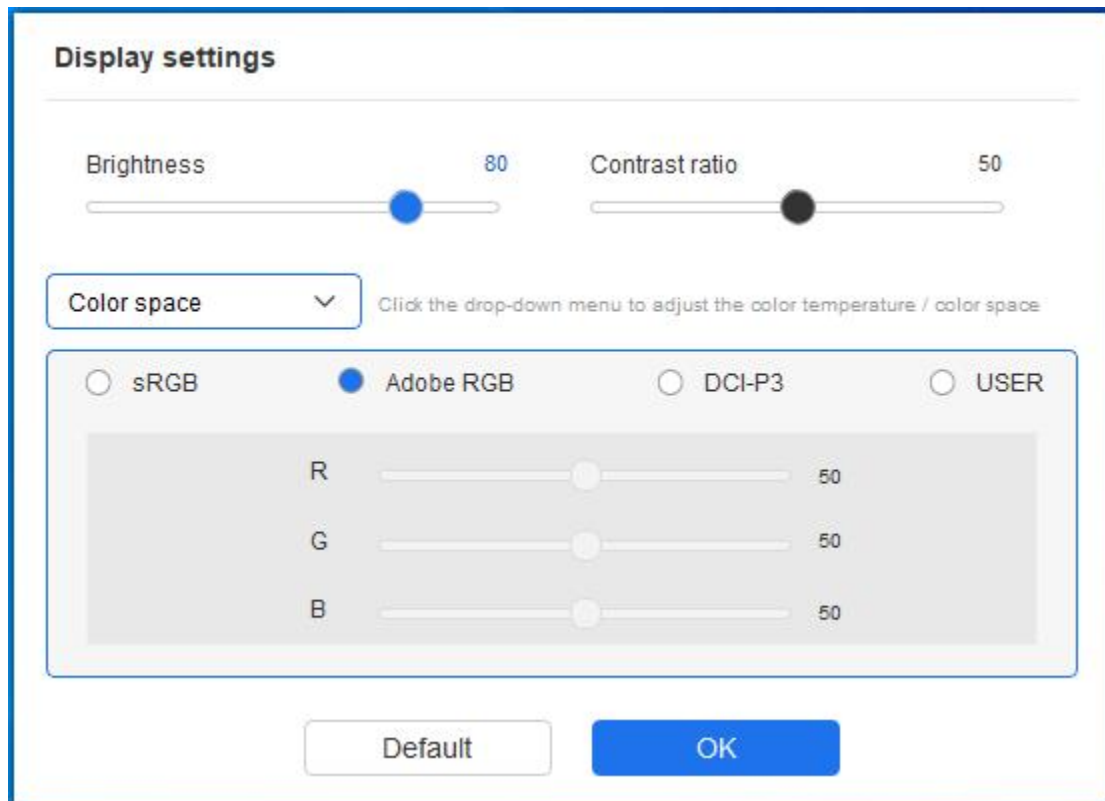
Left-handed mode: Rotate 180°.

Display settings:

Color temperature: The driver enables five modes, i.e., 5000K, 6500K (default), 7500K, 9300K, and USER. In the USER mode, color temperature can be customized by adjusting the R, G and B values.



Color space: The driver provides four modes: sRGB, Adobe RGB, DCI-P3, and USER. In USER mode, you can customize the color space by adjusting the values of R, G, and B.



This product has preset three color modes: sRGB, Adobe RGB and DCI-P3. And all modes have been completed accurate and strict color gamut limits and calibration. So you can use it directly without the ICC limit again.

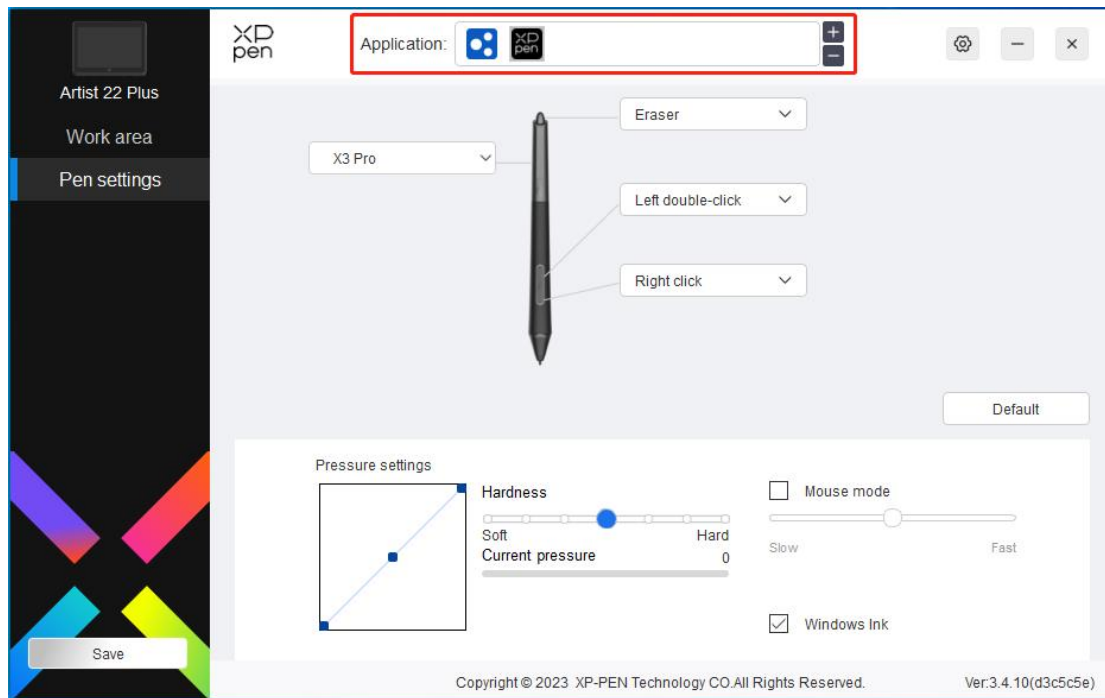
If you want to configure ICC manually, you can select User mode in the display setting option under the driver interface, and configure it under native color.

When setting the color temperature, the color space is set to USER; When setting the color space, the color temperature is 6500K.

Brightness, Contrast: Slide the corresponding slider to adjust the brightness and contrast.

Application

The driver allows you to set different pen key functions for different applications.



Add an application to the application list, select an application, and then customize the function of the pen keys for that application.

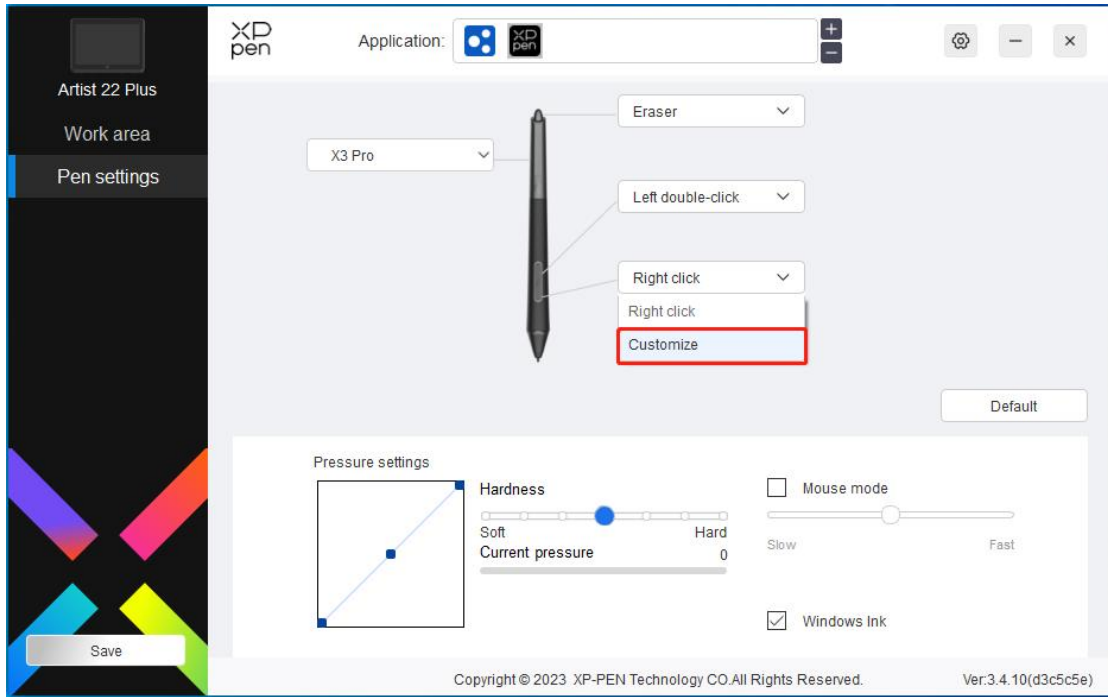
For example, if you select an application and change its configuration in the driver, the change is valid only when you use the application. When you switch to another application, the driver will recognize it automatically. You can add up to 7 applications.

1. Click the + icon on the top right of the application bar to open the application list;
2. Select an application to be added from the running applications or click Browse to add from the installed applications;
3. Click "OK" to add the selected application;
4. Select an added application, and click the - icon on the top right of the application bar to delete the application.

If you select all other applications, it will apply to other uncustomized applications.

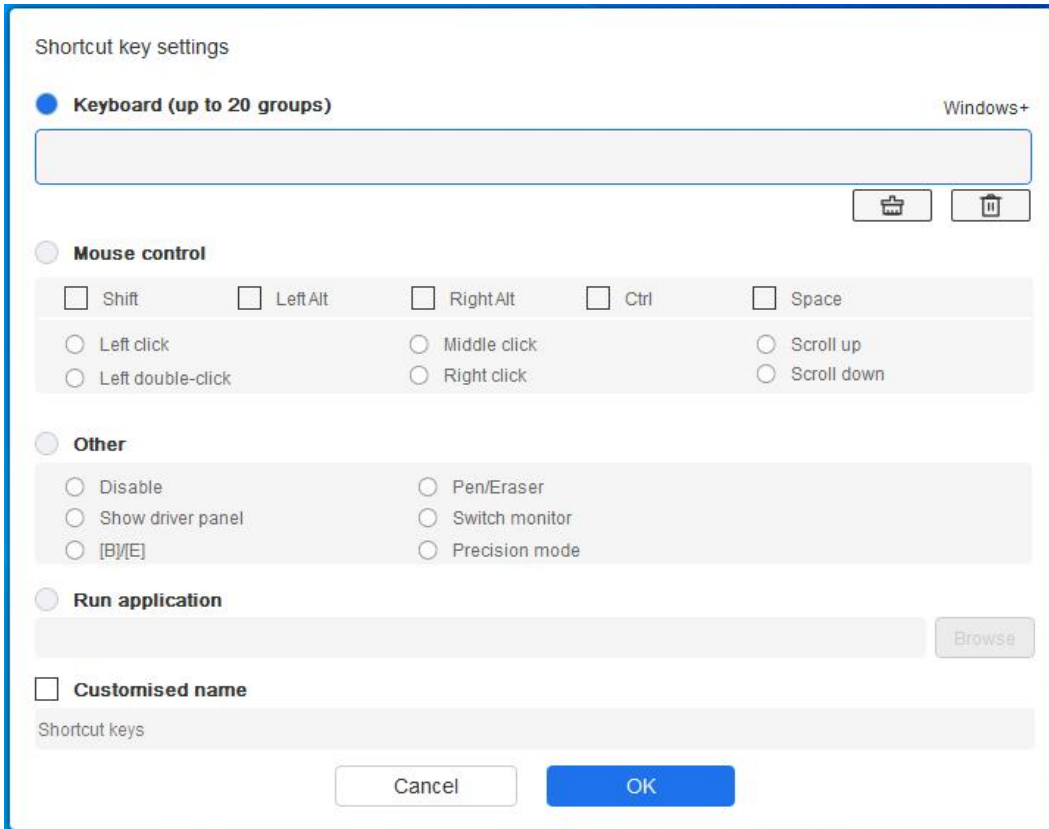
Pen Settings

When the stylus is within the Work Area, the device will recognize the stylus and add it to the driver. The stylus used should be compatible with the device.



Click "Customize" in the drop-down menu to go to shortcut key settings and customize pen key functions.

Before setting, tick to select any of the options under Keyboard, Mouse Control, Others, and Run Application.



Keyboard:

You can set keyboard shortcut, for example, set it as "Alt+A" in 3D MAX, so the alignment tool

can be used.

You can set a combination of multiple keys such as Ctrl+Z and Ctrl+S. When you press the key, the set shortcut keys will all run once.

Windows (Command): You can add a combination key containing system key, for example: to enter Win(Cmd)+Shift+3, you can press Shift+3 and the driver will bring the system key automatically.

Mouse Control:

You can set mouse control and keyboard combination key. For example, if you select Shift and Left Click, shortcut actions are enabled in the software that supports this combination key.

Other:

Precision mode: It limits the screen area to a small area. This function allows you to draw more precisely in the area.

Run Application:

Run the selected application.

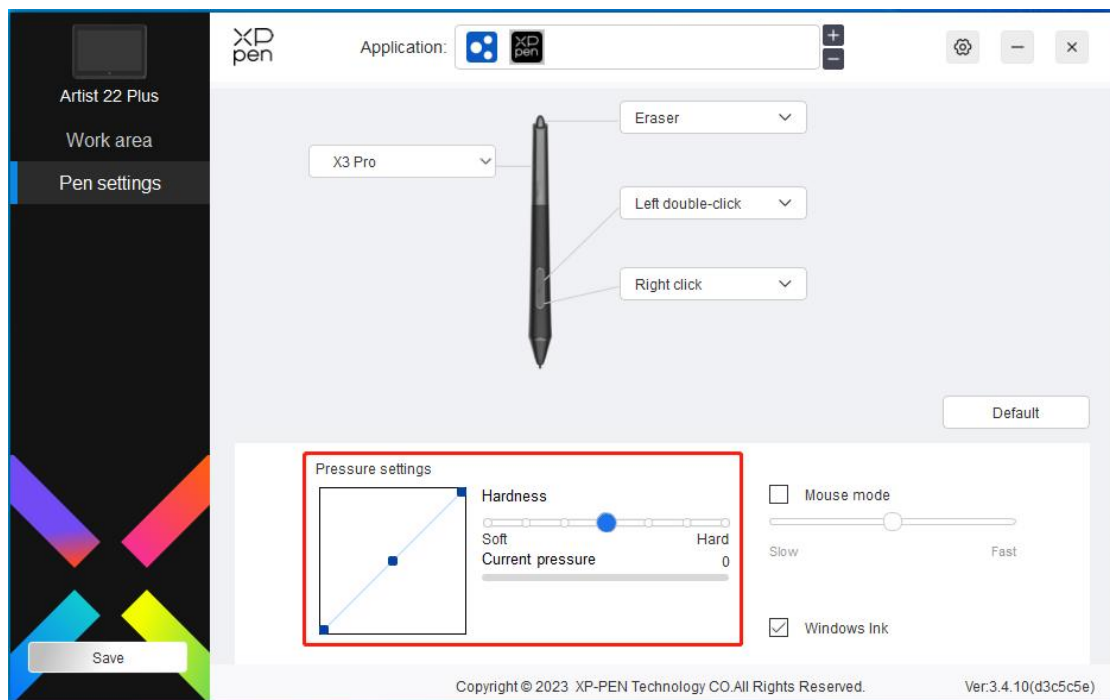
Customized name:

You can customize the name of the current key settings.

Pressure settings:

The sensitivity of pressure can be adjusted by adjusting the curve or moving the slider on the progress bar.

Current pressure can test your current pen pressure.



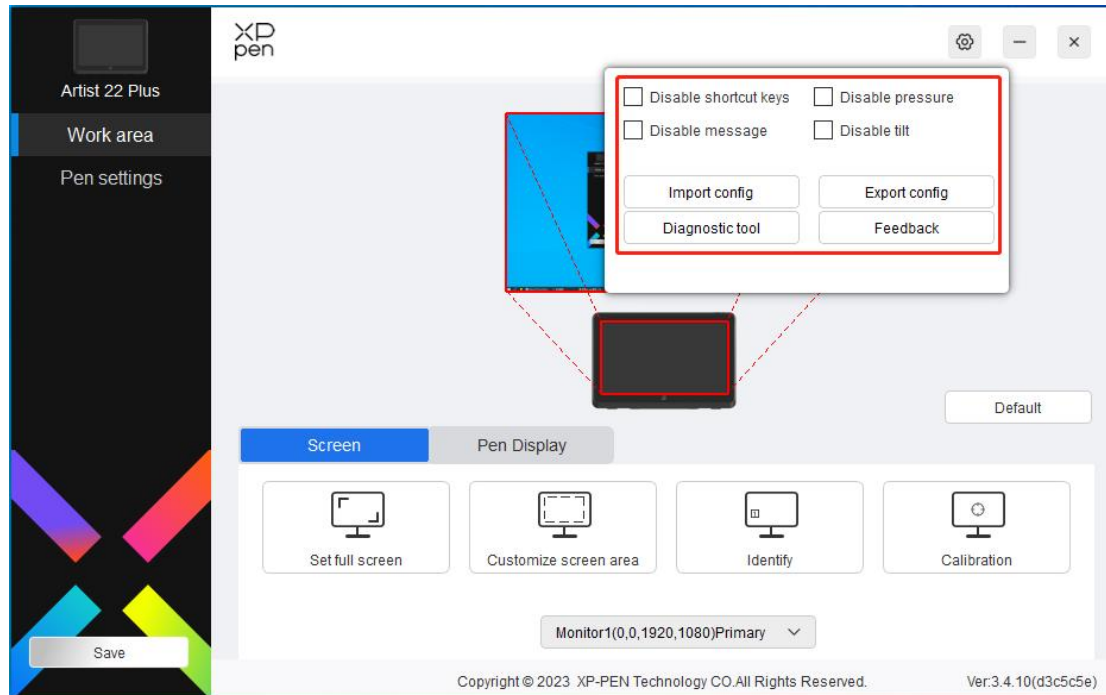
Mouse mode:

When you move your pen out of the device, the cursor will stay where you leave, which is like operating a mouse. Select the mode and you can adjust the speed of the cursor on your device. If you do not select the option, the pen mode applies by default.

Windows Ink (for Windows only):

Windows supports handwriting input, if you need to use handwriting in software such as Microsoft Office/Whiteboard, please do not turn it off.

Driver Settings



Disable shortcut key:

Disable the functions of all keys of the device.

Disable message:

When you press a key, no key message will be displayed at the bottom of the screen.

Disable pressure:

You will not feel the pressure of the stylus when using the stylus.

Disable tilt:

This will disable the tilt effect of the stylus.

Import & export config:

You can import/export configurations to save and read their settings. (When you need to import or export the changed functions, click the "Save" button on the left side of the driver interface first to save the current configuration. This function is available for only the same operating system.)

Diagnostic tool:

You can use the diagnostic tool in case of any problems while using the driver.

Feedback:

If you have any questions or suggestions during the use of the driver, you can give us feedback through this page.

Driver Uninstallation

Windows:

Go to Start -> Settings -> Apps -> Apps & Features, find "Pentablet" and then left click

"Unload" as per prompts.

Mac:

Go to Go -> Applications, find XP-PenPentabletPro and then click "UninstallPenTablet" as per prompts.

Linux:

Deb: Enter command `sudo dpkg -r XPPenLinux` and execute the command;

Rpm: Enter command `sudo rpm -e XPPenLinux` and execute the command;

Tag.gz: Unzip file. Enter command `sudo`. Drag `install.sh` to the window and execute command.

FAQs

- 1、 Computer fails to recognize the device.
 - a) Check if your computer's USB port used works normally. If not, use another USB port.
- 2、 Stylus does not work.
 - a) Make sure you are using the stylus that originally came with your device;
 - b) Make sure you installed the driver correctly, and check if the pen settings of the driver is normal.
- 3、 The drawing software cannot sense the pen pressure while the cursor can move.
 - a) Check if the drawing software supports pen pressure;
 - b) Download the latest driver installation files from XPPen website, and check if the pen pressure is normal in the driver;
 - c) Before installing the driver, turn off your antivirus software and graphics software;
 - d) Uninstall drivers for other drawing displays/tablets before installation;
 - e) Restart your computer after the installation is completed;
 - f) If the pen pressure is normal in the driver (Windows: ensure Windows Ink is enabled in the pen settings of the driver), run the drawing software and test it again.
- 4、 Line latency during drawing with the software.
 - a) Check if the computer configuration (CPU&GPU) meets the recommended configuration requirements for the drawing software installed, and optimize related functions via settings according to the FAQs posted on the official website of the drawing software.

If you need any further assistance, please contact us at:

Website: www.xp-pen.com

Email: service@xp-pen.com